

KLINGLE VALLEY TRAIL ENVIRONMENTAL ASSESSMENT

October 2009

Project Information Sheet

Klingle Valley Trail Environmental Assessment

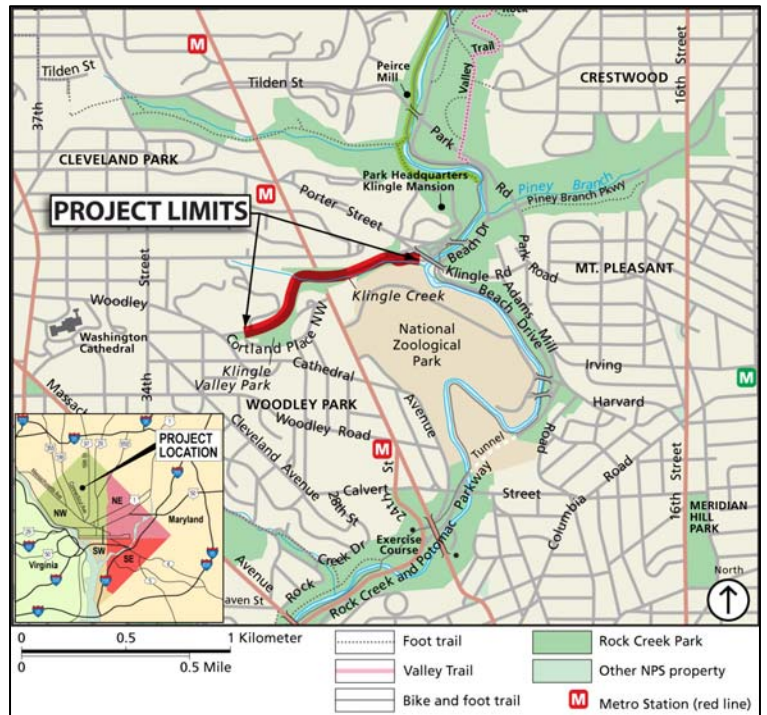
Between Porter Street, NW and Cortland Place, NW

District Department of Transportation (DDOT)

Project Summary

DDOT and the Federal Highway Administration (FHWA), as lead agencies, in cooperation with the National Park Service (NPS), are preparing an Environmental Assessment (EA) in accordance with the National Environmental Policy Act of 1969 (NEPA) to evaluate the potential impacts of a multi-use trail in Klingle Valley.

The EA will analyze a range of alternatives for a multi-use trail constructed within DDOT right-of-way on the currently closed segment of Klingle Road. The alternatives will include environmental and drainage system improvements of Klingle Valley. In addition to the EA, DDOT will evaluate potential effects to cultural resources in accordance with Section 106 of the National Historic Preservation Act.



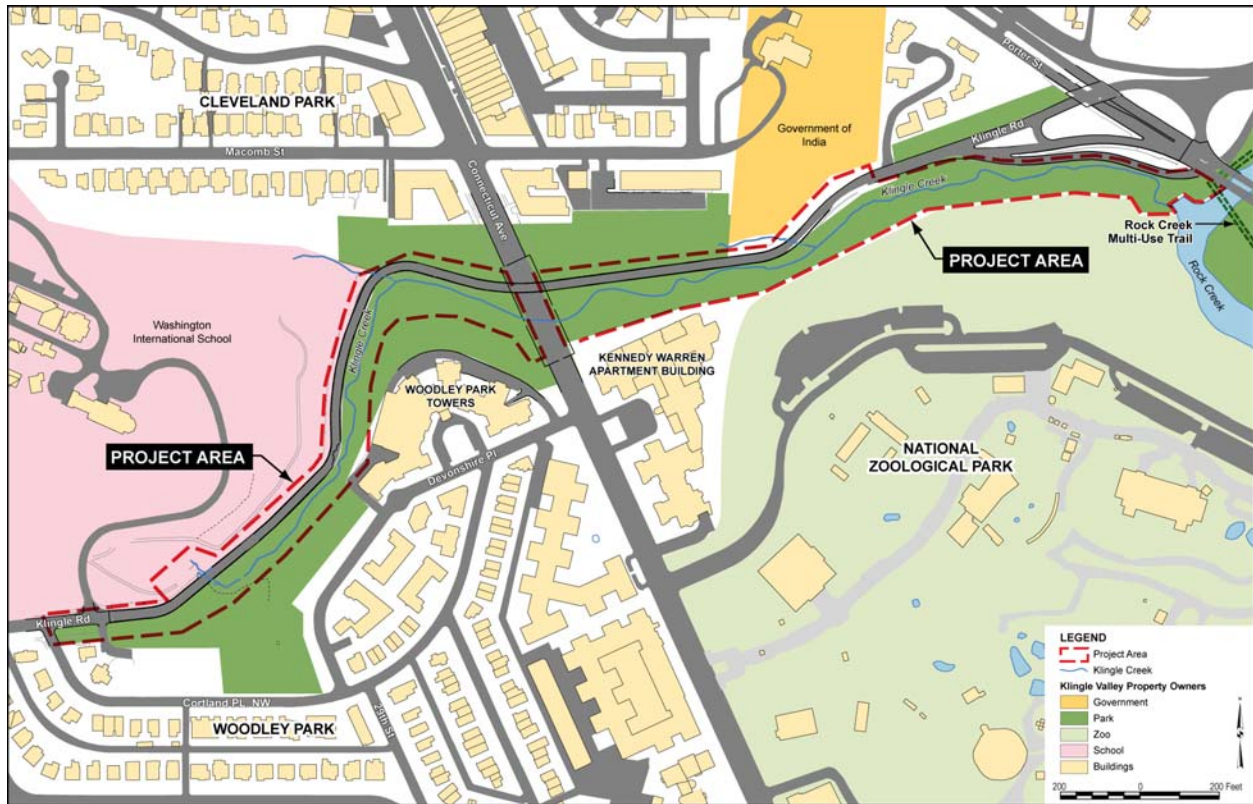
Existing Conditions

The 0.7 mile segment of Klingle Road between Porter Street, NW and Cortland Place, NW has been closed to traffic since 1991 due to severe deterioration of the roadway, headwalls, and underlying stormwater management systems. The deterioration was caused by failure of the drainage system to effectively convey stormwater through Klingle Valley, causing frequent flooding along Klingle Creek.

Project Contact

Austina Casey, Project Manager
District Department of Transportation
comments@klingletrail.com

As part of the EA process, a no-build alternative and several build alternatives will be developed and the potential environmental impacts will be analyzed for each.



Project Schedule

A number of opportunities will be given to the public to provide input on the project. The schedule of public meetings is tentative; specific dates, times, and meeting locations will be announced as the project progresses.

Milestone	Date
Project Initiated	Summer 2009
Public Meeting #1	Fall 2009
Environmental Studies/Alternatives Development	Fall 2009
Public Meeting #2	Winter 2009
Preparation of Environmental Assessment (EA)	Winter 2009 - 2010
Notice of Availability of the Draft EA	Spring 2010
30 Day Draft EA Public/Agency Review Period	Spring 2010
Public Hearing for the Draft EA	Spring 2010
Notice of Availability of the EA/Finding of No Significant Impact	July 2010



For more information please visit www.klingletrail.com

